

NOVEMBER 2018

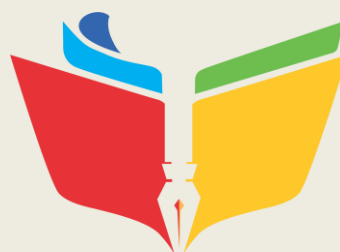
VOLUME 1 NUMBER 2

ISSN 2620 - 410X

L2

LinguA-LiterA

JOURNAL OF ENGLISH LANGUAGE TEACHING LEARNING AND LITERATURE



LinguA-LiterA

- **Correlation Between Social Networking Activity and STKIP PGRI Trenggalek Students' Writing Skill**
LYA FEBRIANA YUNITA ROHMA, SRI UTAMI DEWI, YULIA NUGRAHINI
- **The Effect of Tongue Twister Toward Students' Pronunciation Ability**
FENTI DWI LUVIANA, SUKIRNO, WILLY ANUGRAH GUMILANG
- **The Effectiveness of E-Learning in "Idiom Based Lexical Studies" at STKIP PGRI Tulungagung**
DINA KARTIKAWATI, IKA RAKHMAWATI
- **An Analysis of Command Speech Act in Surah Ya-Seen By Saheeh International**
SUSANTO
- **An Analysis of Teacher's Questioning Strategies and Students' Responses in English Classroom Interaction**
ANINATUL MUKHAROMAH, TASLIMAH RETNO MARPINJUN, IKA RAKHMAWATI
- **Analyzing EFL Learners' Needs for Vocabulary Learning Materials**
YUDI BASUKI, ASTRIED DAMAYANTI, SRI UTAMIDEWI
- **ESP Materials for Medical Records Students: An Evaluation Study**
YENI NURMALA HIDAYATI

PUBLISHER ADDRESS :

Pendidikan Bahasa Inggris STKIP PGRI Trenggalek, Jl. Supriyadi 22 Trenggalek 66319
Telp./Fax. : 0355 791 551, E-mail : l2englishjournal@gmail.com